



SCOTT COUNTY COMMUNITY FOUNDATION

Community Connection

VOLUME 10, ISSUE 1

WINTER 2013

BOARD OF DIRECTORS

- Lynda Phillips, *Chairman*
- Adam Gibson, *Vice Chairman*
- Dan Slattery, *Treasurer*
- Syd Whitlock, *Secretary*
- Pat Bridge
- Barbara Broady
- Lisa Conder
- Marsha Howser
- Hank Jentzen
- Connie Kenninger
- L.L. Lowry
- Jason Mount
- Matt Oberlies

STAFF

- Jaime Toppe
Executive Director
- Charlotte Boswell
Chief Financial Officer
- Hannah Hatton
Intern
- Ali Brown
Intern

INSIDE THIS ISSUE:

- Soil & Water Fund 2
- Imagination Library 2
- Phil Martin Fund 3
- Fall Dinner 3
- Youth Council 4
- Contact Us 4

Be the first to read our newsletter! Sign up now for our email distribution list and help us to save the environment and postage costs!

15th Anniversary Ends With Fall Dinner Celebration

Our yearlong celebration of our 15-year anniversary culminated with our fourth annual "Thanks4Giving" fall dinner held at Jeeves & Co. on Nov. 15. This event honors volunteers, donors and nonprofit organizations in the community. Not only was the gathering held during National Community Foundation Week, but also on National Philanthropy Day. The Community Foundation board of directors and staff expressed gratitude to everyone who gives their time, talent and treasure for the betterment of the community.

An update on our activities for the year was given, and ended with two major announcements. Our endowment-building campaign, "15 Years. \$15,000. 15 Days." matched gifts to endowment funds with a 50 percent match up to \$5,000. The goal was surpassed within days of the start of the campaign on Nov. 1, and a total of \$31,610 was raised in 15 days!

We also announced a partnership with United Way of Scott County to bring the Dolly Parton Imagination Library to Scott County (read more on page 2).

Guest speakers for the evening shared how they have been impacted by the Foundation in some way. Elle Lee, a kindergarten teacher at Lexington Elementary School, spoke about the improvement that she and fellow teacher Lindsey DePriest have seen in the



Rod Wilson

students since the Lexington Good Faith Preschool has opened. The preschool has received grants from both the Scott County Youth Grantmaking Council (YGC) and the Community Foundation during the Community Grants Program. Russ Comer, a former board member, spoke about establishing a fund in memory of his father, Bob, and serving on the committee of the scholarship established in memory of his sister, Shelley Comer Akers. Evan Comer talked about how he has come full circle in his involvement with the Community Foundation: first, as a member of the YGC, then as a scholarship recipient, next as an intern to produce a promotional video, and finally as a committee member for the scholarship established in memory of his grandfather. Finally, Rod Wilson, a former client and current staff member and volunteer at the Scott County Clearinghouse, shared his inspirational story.

This dinner was made possible due to the generosity of many people and businesses, and we would like to

Continued on Page 3

Thoughts From Our Chairman

Dear Friends of the Foundation,

Have you ever wondered just what Auld Lang Syne means? If you're like me, you know the tune and maybe even the chorus, but have to just hum the verses. Why do we sing it on New Year's Eve?

I did a little research and found out that it was originally written in 1788 by the Scot Robert Burns. Guy Lombardo is credited with making it famous on his 1929 New Year's Eve radio program. The Scottish phrase Auld Lang Syne literally means 'old long since', but translates to 'times gone by'. The song is all about remembering our past friends.

If you think about it, Auld Lang Syne has a great message for the New Year. There are lots of ways to remember our friends. It could be

through a phone call, card, email or visit for no reason other than just to chat. Some of our friends have passed on. These friends can be honored through memories and pictures.

The Scott County Community Foundation has many ways to help you remember those who are dearest to you. Maybe you have friends you knew in school – we can find a fund that tributes your memory. Maybe you want to memorialize a loved one – we can help you set up a fund that honors them forever. Maybe you want to get involved and meet some new friends – we would love to have you as a volunteer in our organization.

*Should old acquaintance be forgot,
and never brought to mind?*

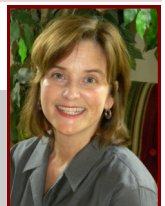
Should old acquaintance be forgot,

and auld lang syne?

*For auld lang syne, my dear,
for auld lang syne,
we'll take a cup of kindness yet,
for auld lang syne.*

As we begin 2013, I encourage us all to take a few minutes to remember our old friends and think about the new ones we might make this year. We might even consider a resolution to give more to those around us whether of our time or resources. We'll take a cup of kindness yet, for auld lang syne.

LYNDA PHILLIPS
CHAIRMAN



Soil and Water Fund Becomes Permanent Endowment

We are pleased to announce the establishment of an endowment fund to benefit a local organization. The Scott County Soil and Water Conservation District Fund will provide income for Scott County's SWCD and protect their ability to meet future needs.

The Scott County SWCD was the first organization to take advantage of a new program we offered a few years ago to grow funds over time. The Acorn Fund program allows donors to establish a fund with \$1,000 and grow to \$5,000, the minimum required for endowment funds, over a period of five years. SWCD supporters have been faithful in their quest to grow the fund, and took only three years to reach their goal after they established the fund in 2009.

Scott County's SWCD addresses

issues such as agricultural conservation, urban conservation, forestry, wildlife habitat enhancement, water management, land use change and natural resource education. They have numerous activities to support their mission, including the Cover Crop and Clean Creek Clinic, Stewardship Week, Hardy Lake Sweep, Agribusiness committee, free wildlife food plot seed, pasture and hay land workshop, education programs at the schools, and much more. By working to protect and conserve Scott County's soil and water resources, they are not only benefiting farmers, but all residents of our community.

Through their endowment fund, these efforts will have additional support. Farmers have many creative options of giving to the fund, including: instruct your grain elevator to make the first 200 bushels of your

delivery the property of the Scott County Community Foundation and have them assign the check directly to the Foundation (this may be the most tax efficient option). Or farmers may choose to give \$1 per acre; or an amount of their choice per chicken, cow, hog, etc. Donors may also send a tax-deductible check to the Scott County Community Foundation for the Scott County Soil and Water Conservation District Fund.

"It is great that the Scott County Community Foundation and Scott County Soil and Water Conservation District have partnered with each other to make this happen," said SWCD Board Chairman John Hardin. "Good soil health, conservation, and water quality will be thought of for many years to come. Thank you to all the SWCD partners and contributors, now and in the future."

Imagination Library Initiative Provides Free Books



A partnership between the United Way of Scott County and Scott County Community Foundation has led to the launching of the Dolly Parton Imagination Library program for Scott County. This initiative delivers a free book every month to the home of Scott County children, from birth through age five. There are no income or other restrictions; the only requirement is that a child resides in Scott County.

United Way and the Community Foundation are seeking to increase early childhood literacy rates through this program. With almost half of Scott County's children entering kindergarten without necessary literacy skills, by providing books to children, this initiative will help to give children a head start on success in school and life.

A registration event will be held on

Saturday, Jan. 26 from 10 a.m. until noon at the Imagination Station Scottsburg, 1523 N. Gardner, located

north of Scott Memorial Hospital. Children can play for free while parents/guardians register them for the free books. There will be activities, refreshments and snacks, and Elmo will make a visit. Stories will be read to the children as well.

For those who are unable to attend the event but would still like to register their child, you may do so year-round through the Community Foundation.

United Way of Scott County currently has a matching grant opportunity through the Indiana Association of United Ways and funded through Lilly Endowment. Any donations over \$100 will be matched dollar-for-dollar from any donors



who have not contributed to the United Way in the past year. Any donors who are currently donating to United Way through payroll

deduction who increase their giving may also be eligible for a matching donation.

The Foundation Board of Directors has also pledged financial support to this initiative, but it will truly take the community to sustain this valuable program.

It costs only \$25 to sponsor one child each year. If you would like to donate to this initiative, please mail your tax-deductible contribution to United Way of Scott County; PO Box 227; Scottsburg, IN 47170. You may also stop in our offices at 60 N. Main St., Scottsburg to learn more about the program.

Phil Martin Memorial Fund Benefits BizCamp Program

Philip Glenn Martin's commitment to our community was evident during his lifetime. Now, more than 14 years after his death, his contributions continue to make their mark through a fund established at the Scott County Community Foundation.

Phil served in the U.S. Navy during World War II as a boat officer during the famous assault on the beaches of Iwo Jima in the South Pacific.

Phil was a graduate of Indiana University in Bloomington, where he earned both his bachelor and master degrees in business. He retired from his business in the Chicago area and moved to Scott County in 1991. He first joined the local Chamber of Commerce in 1992 as a businessman. He had helped his wife, Vernal, establish an antique business in Finley Township. The next year, he was selected as board president of the Chamber.

In 1994, Phil was chosen to serve as the first executive director of the local Chamber. Under his guidance, membership grew and programs, such as the Scott County Leadership Program and the Third House Legislative Program, were created. He retired in 1996, but remained active in both the Chamber, and the newly-created Scott County Community Foundation, of which he helped lead the efforts to establish in Scott County. He served on the Community Foundation's board of directors and assisted with publicity.

He was also involved in other community efforts, including serving as



co-chair and organizing the committee responsible for the Scott County Comprehensive Educational Feasibility Study, participated in the Scott County Total Quality of Life Initiative, organized and chaired the committee to publish the Scott County Pictorial History Book, and much more. For these efforts, he was a nominee for the Scottsburg Mayor's Good Neighbor Award, and had also received a key to the City of Scottsburg.

Friends from the Chamber gave the following memorial to Phil. "Phil was a shining example to our community of a heart in the right place. His commitment to people far outweighed his commitment to any project. He saw the success of a community not only in dollars and cents, but also in relationships and friendships. For these reasons his absence will be felt by everyone. May we look to his life and find encouragement and motivation in our individual efforts. How thankful we should feel to have known a man such as Phil and be able to draw from his spirit. His legacy goes far beyond the list of his accomplishments, but are made important because of his unselfish and humble attitude.

Upon Phil's death in 1998, his wife and daughter, Heidi, established a scholarship fund at the Community Foundation. Students who graduated from Scottsburg High School and had resided in Finley Township were eligible for educational assistance.

The purpose of the fund was recently changed to provide scholarships to students to attend the Greater Scott County Chamber of Commerce's BizCamp program, where students ages 9 to 11 learn the basic concepts of business and economics and how education is relevant to the workplace at a one-week summer camp at the Junior Achievement Center in Louisville. This program is available to students at no charge. The Chamber hosts an annual fundraiser, Chamber Challenge for Education, to support the program, and also relies on donations from individuals and businesses in the community. Now, with the Philip Glenn Martin Memorial Fund providing support to the program each year, that could allow more students to benefit from the program.

"On behalf of the Board of Directors of the Greater Scott County Chamber of Commerce, we are pleased to know that the family has decided to direct these funds to support our students going to Junior Achievement Biz Camp," said Chamber Executive Director Keith Colbert.

"I know this is representative of Phil's ongoing commitment to this community. Although I never had the opportunity to meet Phil personally, I have been honored to follow in his footsteps as director of the Chamber of Commerce."

Keith Colbert, Executive Director, Chamber

Anniversary Celebration Concludes With Fall Dinner (continued)

express our gratitude. Keith Colbert, executive director of the Chamber of Commerce, served as emcee. Members of the Scott County Youth Grantmaking Council served as escorts to the guests. Ryan and Stacy Payne volunteered as auctioneers for the live auction.

Sponsors included: Blue & Co., Greater Scott County Chamber of Commerce, Dr. Lindsey Hardy, ILPEA Industries, Bob and Connie Kenninger, Morgan Foods, Multi-Color Corp., Sae-

gesser Engineering, Scott County School District 2, Scott County State Bank, Scottsburg Building & Loan Association and United Way of Scott County.

Local donations for auction items were received from: AFLAC/Pat Bridge, Jeff and Lisa Conder, Lee Anne Hahn, Health Centered Chiropractic, Jeeves & Co., Morgan Foods, Old National Bank, Matt and Lynda Phillips, Scott County Family YMCA, Sky Sport

Fitness, Sunshine House Health Food Store, Jon and Beth Turner and family.

Scott County Tobacco Prevention & Cessation Coalition won the door prize of \$250 awarded to nonprofit organizations in attendance, and Bob and Connie Kenninger won \$250 to be donated to the endowed fund of their choice as winners of the sponsor raffle. They chose to donate to the Kenninger Music Education Fund.



Scott County Community Foundation

PO Box 25

60 North Main Street
Scottsburg, IN 47170

Phone: 812-752-2057

Fax: 812-752-9257

E-mail: info@scottcountyfoundation.org

Website: www.scottcountyfoundation.org

www.facebook.com/ScottCountyCommunityFoundation

Non Profit
U. S. POSTAGE
PAID
SCOTTSBURG, IN
PERMIT NO. 12

Looking Forward, Giving Back.

Youth Grantmaking Council Busy During Holidays



Members of the YGC were busy with meetings and community service projects over the holidays, through volunteering at the Kids First auction, bell ringing for the Clearinghouse, shopping for the Angel tree at Christmas and packing food for Blessings in a Backpack. They enjoyed their annual Christmas party, welcoming new YGC members. Shown above (front row): Hannah Dickerson, Caleb White, Lauren Howser, Alexa Howser, Isaak Mount, Eliza Mount, Elle Fleenor and Caity Rice. Back row: Evan Howser, Emma Waskom, Haley Mullins, Jordan Shuler, Kaleb Mount,

Lindsey Boswell, Carmen Boley, Kevin Jentzen, Ally Ingalls, Lauren Turner and Koby Hawkins. Missing are: Brandon Boswell, Sera Craig, Josiah Croasdell, Braden Hale, Braxton Soloe, Hunter Steinkamp, Luke Taylor, Tyler White, Justice Gabbard, Eva Snowden, Mandy Snowden, Izzy Myszak and Jordan Thomas.

The youth will be accepting grant applications this month for youth-related projects, and are also working on a philanthropy curriculum to introduce to fourth and fifth grade students at the local elementary schools.