

Looking Forward,  
Giving Back

Volume 17, Issue 4  
Fall 2020

# Scott County Community Foundation Community Connection

## Inside This Issue

Leadership Grant

Nonprofit Luncheons

Needs Assessment

YGC Update

### Board of Directors

Heather White, *Chairman*

Melissa Woods, *Vice Chair*

Chris Routt, *Secretary*

Daniel Brunner, *Treasurer*

Tinisha Bowles-Densford

Steve Gwaltney

Kevin Jentzen

Ryan Payne

Al Riggle

### Staff

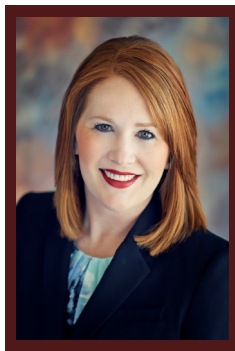
Jaime Toppe,  
*Executive Director*

Charlotte Boswell,  
*Financial Officer*

## New Board Members Welcomed

We are pleased to welcome new board members Tinisha Bowles-Densford, Ryan Payne, and Al Riggle. They began their terms Oct. 1, the start of our new fiscal year. They replace outgoing board members Nancy Barr, Jami Parks, and Christa West, who will be very missed!

Tinisha and her husband, Chance, have two children, Maverick, 3, and Scarlett, 11 months. She graduated from Austin High School in 2007. She received her undergraduate degree in history from Indiana University Southeast in 2012, and graduated from the Liberty University School of Law in 2015. She is an associate attorney at Houston, Thompson and Lewis, PC. Tinisha volunteers as Vacation Bible School Co-Director for Crothersville Church of God, and serves as secretary on the Board of Directors for The Refuge. She served on our grants committee prior to joining the Board.



"My favorite thing about the Scott County Community Foundation is the emphasis the Foundation places on the youth of our community, as they are the future of Scott County," said Tinisha. "As a mother, I am always impressed by what the Foundation does to support and advance early childhood education."

"The Scott County Youth Grantmaking Council is another program that greatly benefits the youth of our community by introducing leadership and valuable community service skills to our youth at a pivotal time in their development," continued Tinisha. "The future is bright for our community thanks to the Foundation and I am looking forward to being a part of it."

Ryan and his wife, Stacy, have two daughters, Lia and Chloe. He is a 2000 graduate of Austin High School and a 2005 graduate of Indiana University

Southeast with a bachelor's degree in business management. He is the District Sales Coordinator for AFLAC, and also works as an auctioneer for Austin Public Auto Auction. Ryan serves as a board member for Scott County School District 1. He enjoys spending time with his family and friends, as well as bicycling and Louisville Cardinal sports. Ryan served on our grants committee prior to joining the Board.



"What I like about the Community Foundation is they help with all aspects of the community, and I enjoy giving back to the place that has given me so much," said Ryan.

Al and his wife Lonna live in Scottsburg. He received a bachelor of science degree in police administration from University of Louisville, and a master of arts degree in human resources from Louisiana Tech University. He is retired from the U.S. Air Force. Al enjoys gardening and history. He is a member of the Scottsburg Kiwanis Club, serves on the board of directors for CRADLE Pregnancy Resource, Scott County Child Abuse Prevention Council, The Refuge, Sheriff's Merit Board and Scott Memorial Health. He also serves on the Kiwanis KIDS Committee with Riley Children's Hospital.



"I appreciate the way the Community Foundation supports such a wide range of projects and programs to improve our community," shared Al.

# SCCF Awarded \$75,000 Community Leadership Grant

We have received a Community Leadership Grant of \$75,000 as part of the seventh phase of Lilly Endowment Inc.'s Giving Indiana Funds for Tomorrow (GIFT VII) initiative. With the grant, we will create a community development plan, provide leadership development training through our recent partnership with Leadership Southern Indiana, and support early childhood education at both school districts.

Scott County Community Foundation is one of 84 foundations in Indiana receiving grants through this round of GIFT VII grantmaking. Lilly Endowment created GIFT in 1990 to help local communities in Indiana develop the philanthropic capacity to identify local needs and challenges. It launched GIFT VII in 2018 and made available a total of \$125 million to help foundations strengthen their leadership capacities in the towns, cities and counties they serve. Lilly Endowment expects to make additional GIFT VII grants in the coming months.

"On behalf of our Board of Directors, we would like to thank Lilly Endowment Inc. for their continued support for our community," said Heather White, board chairman of Scott County Community Foundation. "The implementation grant will be used in several key areas within our county that we are looking forward to making a difference and seeing positive changes."

As part of GIFT VII, we were awarded a plan-

ning grant of \$50,000 in 2019 to convene local stakeholders to identify, prioritize and assess opportunities and challenges in Scott County. We contracted with the Applied Research and Education Center at Indiana University Southeast to conduct a community needs assessment. In March 2020, we were invited to apply for a GIFT VII Community Leadership Grant to implement strategies and activities identified during the planning period.

"We are looking forward to sharing the results from the Community Needs Assessment this fall," said Toppe. "These findings will be used as a roadmap to create a community development plan, the Scott County Vision Plan. We hope this will allow our community to have your voices be heard and enable groups of people to work on the opportunities identified throughout this process."

"As part of the planning grant, we also identified a need for leadership development, so any Scott County residents who are interested in the programs offered through Leadership Southern Indiana should contact us if you need financial assistance or more information about these programs," continued Toppe.

"Our Board of Directors feels it is vital that we invest in early childhood education, specifically in programs that seek to increase the readiness level of children entering kindergarten," said Toppe. "We have partnered with United Way of Scott County for the last several years

to provide free books for children through the Dolly Parton Imagination Library. We will continue our support to this area by funding kindergarten readiness camps at Scott County School District 1, and by providing a matching grant to Scott County School District 2 to expand preschool slots. These opportunities through this implementation grant will continue to put Scott County on the path to a successful future."

Scott County Community Foundation has been in existence since December 1996. We have 102 funds and over \$9 million in assets to address community needs and opportunities.

Lilly Endowment Inc. is an Indianapolis-based private philanthropic foundation created in 1937 by J.K. Lilly, Sr. and his sons Eli and J.K. Jr. through gifts of stock in their pharmaceutical business, Eli Lilly and Company. Although the gifts of stock remain a financial bedrock of the Endowment, it is a separate entity from the company, with a distinct governing board, staff and location. In keeping with the founders' wishes, the Endowment supports the causes of community development, education and religion. The Endowment funds significant programs throughout the United States, especially in the field of religion. However, it maintains a special commitment to its founders' hometown, Indianapolis, and home state, Indiana.

## New Nonprofit Luncheon Topics Announced

In an effort to assist nonprofit organizations with capacity building, we will be hosting quarterly lunch and learn sessions. Board members, volunteers, and staff of nonprofit organizations are highly encouraged to attend. This is a great way to learn best practices, network with peers, and grow your nonprofit into a strong organization that serves your donors in the best possible way!

The 2020-2021 series will include:

- "The Importance of Retaining First-Time Donors" on Nov. 17 from 11-1 at Mid-America Science Park. Presented by Steven Shattuck, Chief Engagement Officer with Bloomerange.

- "Grantwriting 101—Getting Started" on March 2 from 11-1 at Lifelong Learning Center. Presented by June Miller, nonprofit consultant.
- "The Board's Role in Fundraising" on June 8 from 11-1 at Lifelong Learning Center. Presented by June Miller.
- "Outcomes Measurement" on Sept. 14 from 11-1 at Lifelong Learning Center. Presented by June Miller.

The cost to attend is \$10, with lunch and materials provided. We will also be starting a new nonprofit networking group as requested, with details to be announced.

# Community Needs Assessment Findings Released

The Indiana University Southeast Applied Research and Education Center (AREC) recently completed a study that we commissioned last year, and that was funded by Lilly Endowment Inc. The study assesses the current state of community systems and residents' perceptions of top priorities for Scott County. The study finds that Scott County is home to strong social ties and opportunities to volunteer. Residents feel safe and are generally happy with the schools. Most feel that it is a good place to raise children and enjoy the area's natural beauty. Top priorities cut across mental health and substance abuse, education and training, wages, housing, infrastructure, and recreation.

With public engagement as the goal, SCCF will distribute findings in several ways. Dr. Melissa Fry, lead investigator, will present findings to the Scottsburg and Austin City Councils, the full report is available on the SCCF website, along with smaller briefs by issue area, and SCCF will share key findings through social media. We will also host a community presentation this winter. The reports pull together public data on Scott County with the findings from a survey of people living, working, or otherwise engaging in Scott County. The AREC and SCCF distributed paper and online surveys

throughout the community in February and March 2020 and 407 people responded.

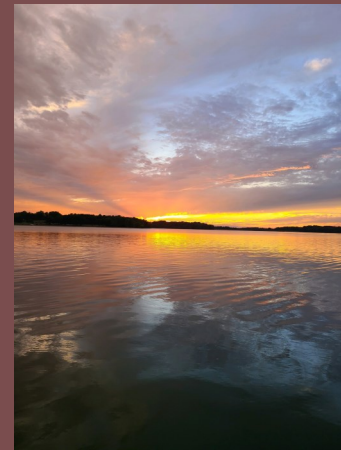
"The report gives us a baseline and some ideas for how to use our assets to address priority needs," said SCCF Executive Director Jaime Toppe. SCCF will use the public data and community perceptions as a foundation for a facilitated strategic community and economic development planning process.

The study's primary author, Dr. Melissa Fry, Director of the Applied Research and Education Center and Associate professor of Sociology, notes that Scott County's strong social ties, good schools, quality social infrastructure such as libraries, parks, and multi-use paths, and desirable location all provide an excellent framework from which to build. "Like many rural manufacturing and agricultural communities, the last few decades brought painful economic restructuring and the serious social challenges that accompanied it, but Scott County has real opportunities to support residents and capitalize on strong community ties, good schools, and the desirable combination of rural amenities and close proximity to urban opportunities."

The study draws connections between health, education, housing, and labor force engagement and success, and recommends a strong focus on these core areas, while also building stronger quality of life through opportunities for recreation, physical activity, and engagement with the arts.

"We can align our resources and efforts toward common goals for a healthy and vibrant community. This study helps us understand that alignment does not mean we all work on the same piece of the puzzle, but it does mean that we should target leverage points that will have positive ripple effects," said Toppe. "We hope this work is a beginning."

The full report is available at [www.scottcountyfoundation.org](http://www.scottcountyfoundation.org).



## TOP 6 ASSETS

- There are opportunities to volunteer in my community.
- This is a safe place to live.
- I am satisfied with local schools.
- This is a good place to raise children.
- We share a strong sense of community.
- This is a beautiful place to live.

## OVERALL PRIORITIES

- Create more opportunities for physical and mental health through recreation and physical activity.
- Prevent substance abuse by building stronger social ties and active civic engagement.
- Attract and keep good teachers and support greater success in education and training.
- Develop and attract living wage jobs.
- Build safe and affordable housing, without sacrificing the community's natural resources.

## TOP 5 SOCIAL ISSUES

- Adult drug or alcohol abuse
- Poverty
- Manufacture or selling of drugs
- Youth drug or alcohol use
- Child physical or sexual abuse



## Scott County Community Foundation

PO Box 25 Phone: 812.752.2057  
 60 North Main Street Fax: 812.752.9257  
 Scottsburg, IN 47170 Email: [info@scottcountyfoundation.org](mailto:info@scottcountyfoundation.org)  
[www.scottcountyfoundation.org](http://www.scottcountyfoundation.org)  
[www.facebook.com/ScottCountyCommunityFoundation](https://www.facebook.com/ScottCountyCommunityFoundation)

Non Profit  
 U. S. POSTAGE  
 PAID  
 SCOTTSBURG, IN  
 PERMIT NO. 12

## *Looking Forward, Giving Back.*

### YGC Welcomes New Members, Elects Leadership Positions

The YGC started its new fiscal year Oct. 1. Interviews were held for new members of the Community Service Committee, and we would like to welcome the following: Ellie Groenenboom of Austin Elementary; Cason Swank of Austin Middle; Brady Watts of Austin High; Emma Bracey of Grace Christian Academy; Brody Moon of Scottsburg Elementary; Izabelle Allgood, Lukas Allgood, Alex Campbell, Marley Fleenor, Scarlett Herald, Chloe Long, and Cohen Long of Scottsburg Middle School; Kelsey Merry and Hailey Schafer of Scottsburg High School.

We said goodbye to the high school graduates, who have given many years of service to the YGC and our community, and will be missed! They include Hannah Brown, Gavin Collins, Abby Colson, Elle Fleenor, Macy Funk, Ally Justice, Ethan Mullins, and Jilly Walker.

With these graduates moving on to their next chapter in life, this opened up positions as voting members. These are the youth board members who make the monthly business decisions as well as handle fundraising and grantmaking. The voting members evaluated members of the Community Service Committee based on how many hours they've served, the number and type of projects they participated in, how long they've been members of YGC, and their leadership potential. They held interviews for the finalists and had discussions on having diverse representation from schools and grades.

Congratulations to Nick Henderson, Emily Justice, Isabelle Marcum, Chloe Mullins, Chloe Myszak, Johnathon Perkinson, Grace Routt, and Lydia Wolf, who are our newest voting members!

Elections were also held for YGC leadership positions. Congratulations to our newest officers and chairpersons: Logan Weilbaker, President; Gavin Borden, Vice President; Ryan Howser, Secretary; Eric Marcum, Treasurer; Lyla Waskom and Hayden Garten, co-chairs of Grants Committee; Kellan Carter and Lucas Toppe, co-chairs of Governance Committee; Braelyn Kleehammer, chair of Community Service Committee; Brinley Soloe and Kinlee Craig, co-chairs of Asset Development Committee.



***YGC members spent a Saturday morning painting playground equipment, staining benches and edging, and mulching at Lake Lola.***